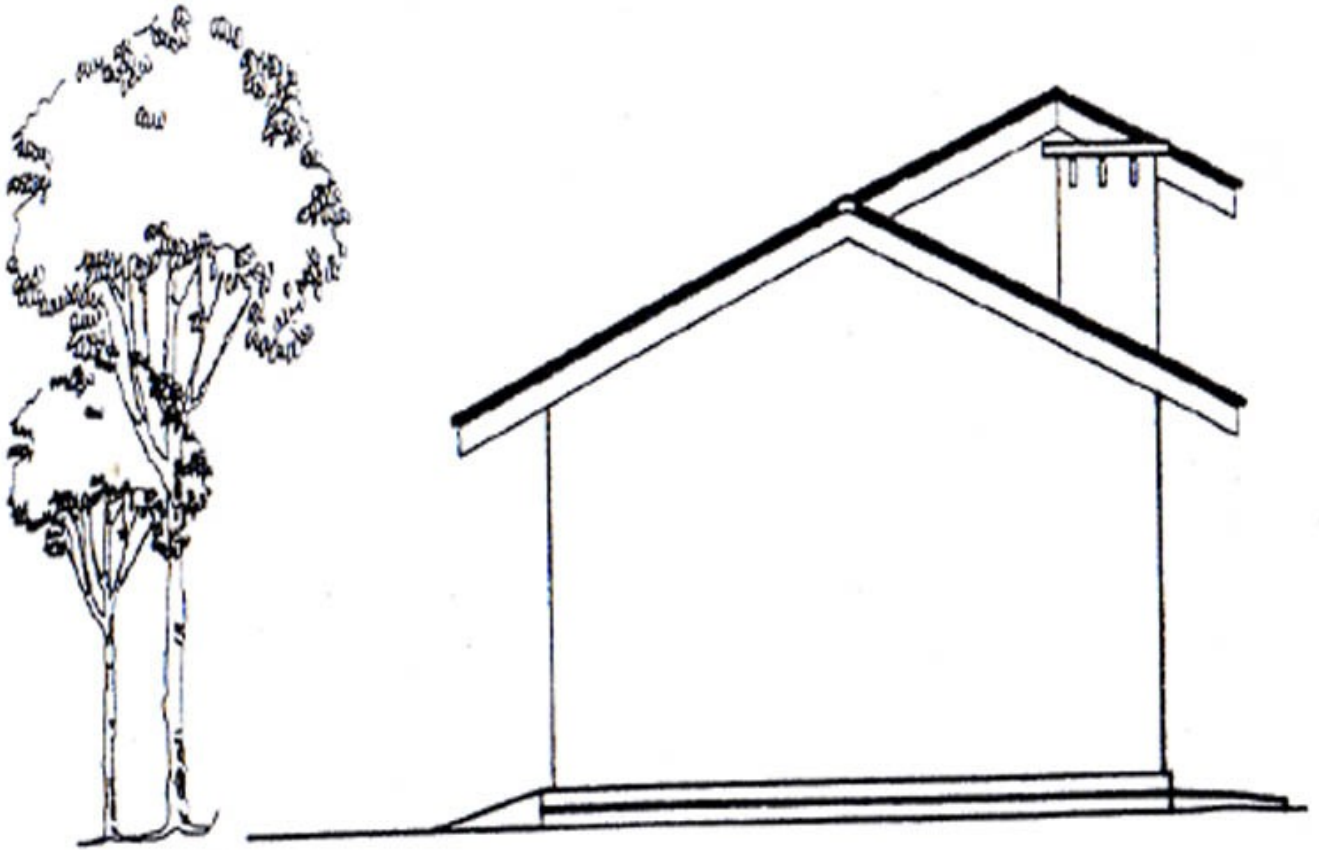
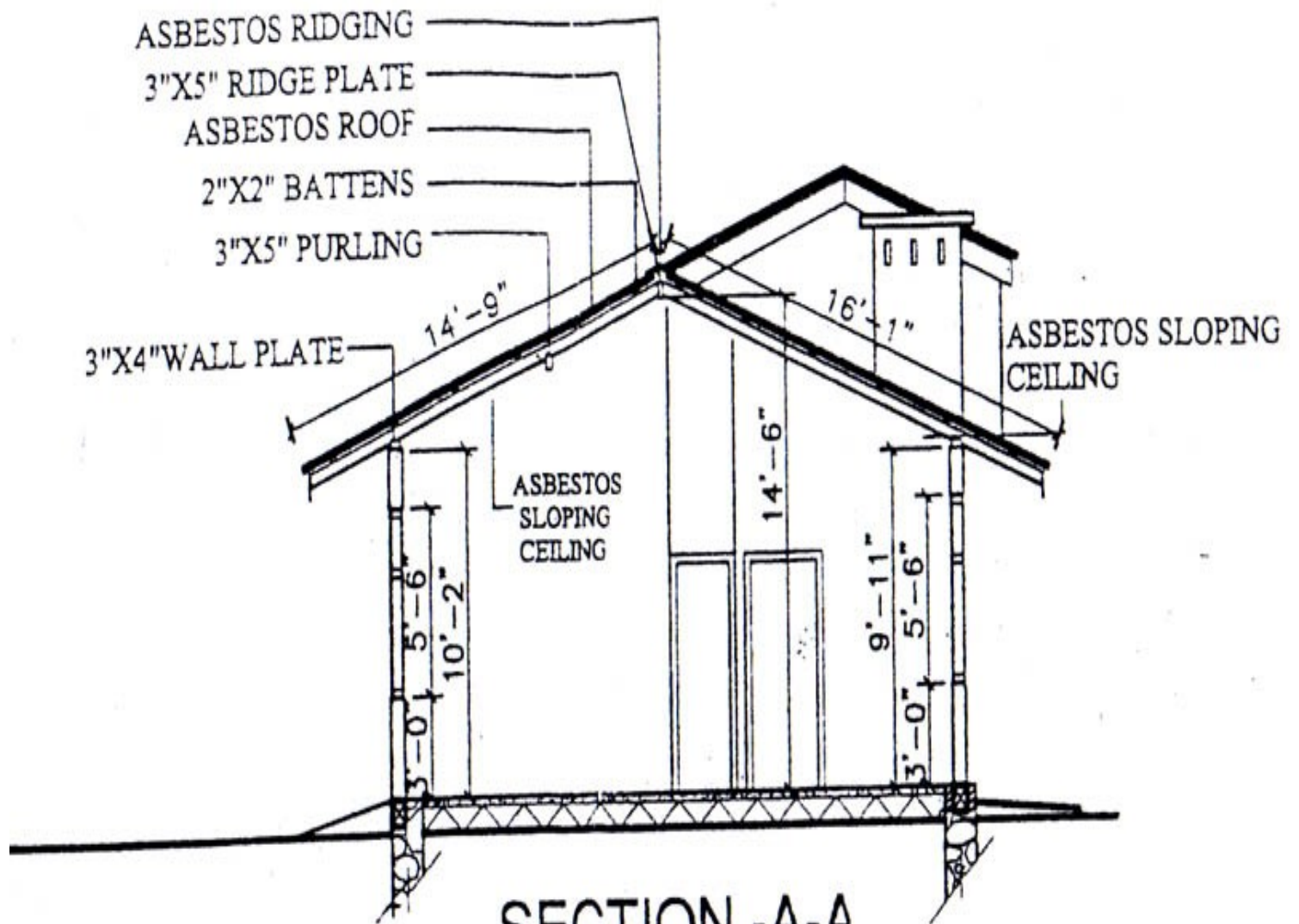


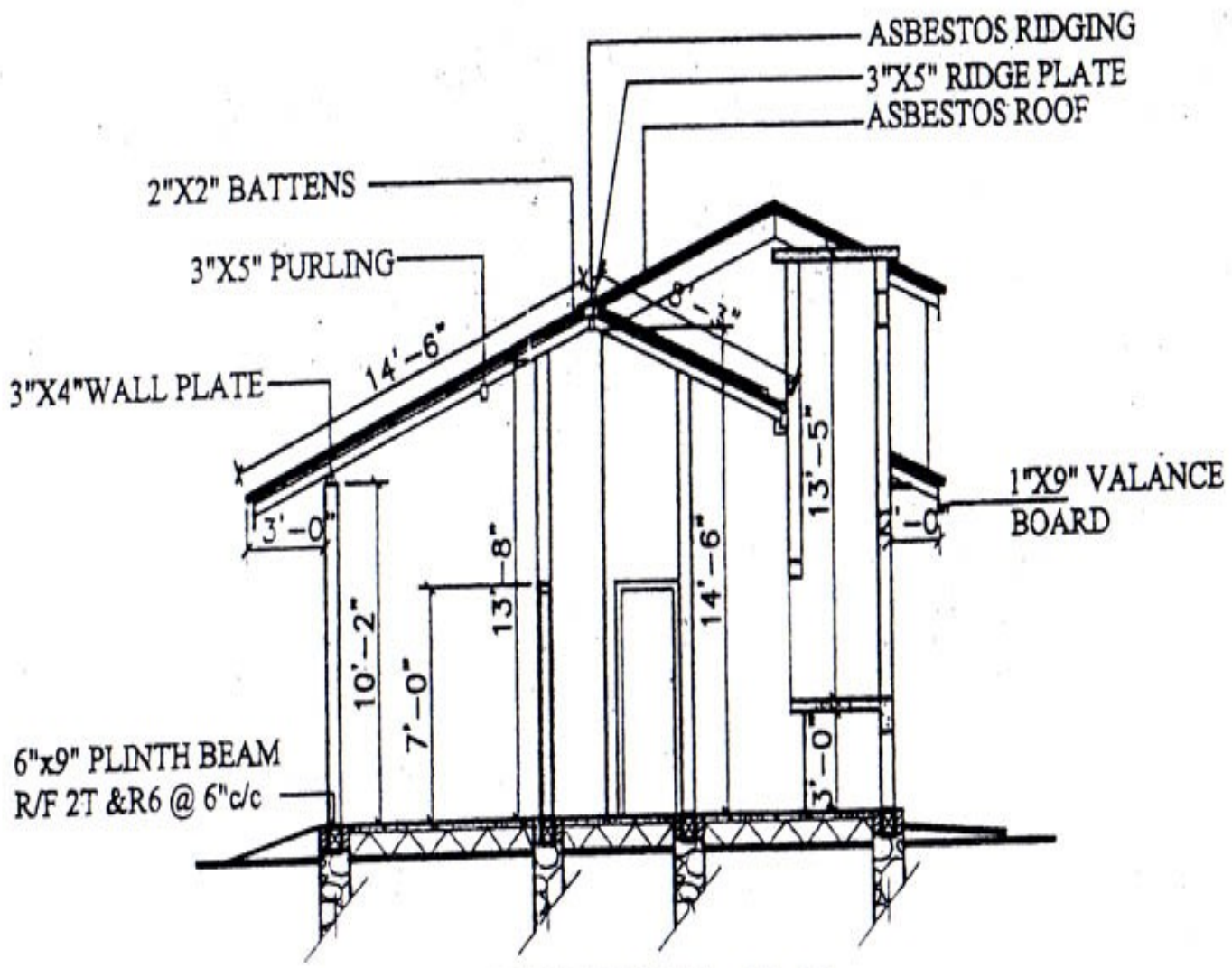
[More >>>](#)



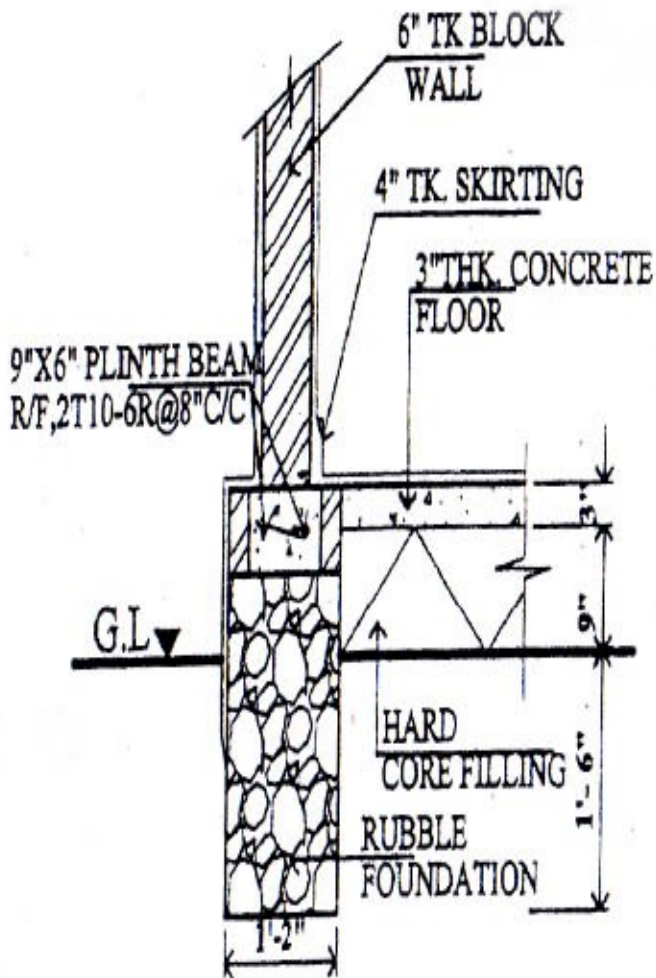
SIDE ELEVATION



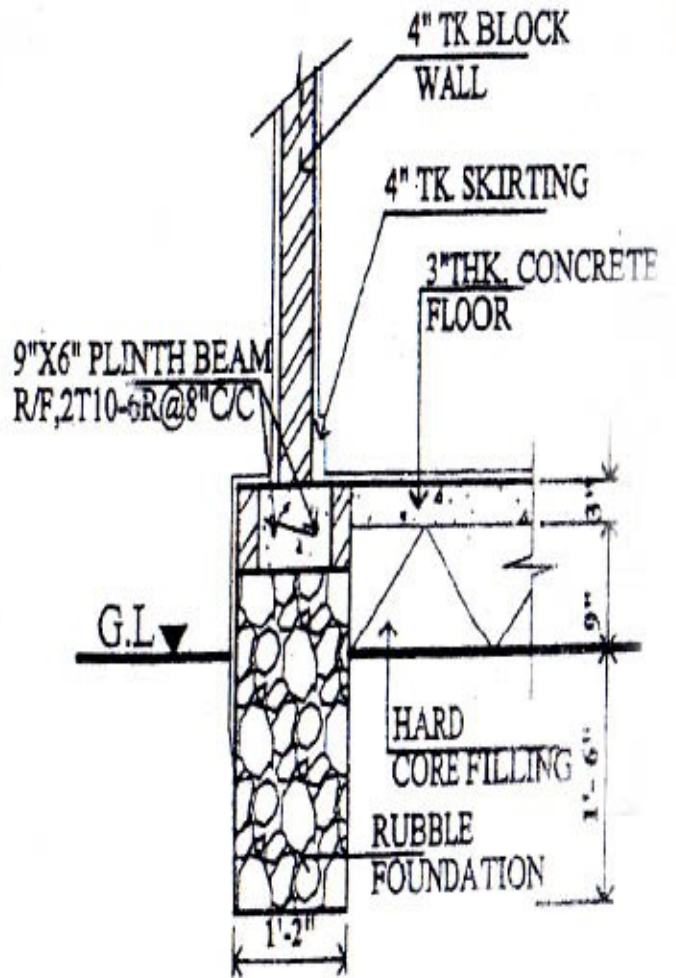
SECTION -A-A
SCALE -8FEET TO AN INCH



SECTION -B-B
SCALE -8FEET TO AN INCH



DETAIL OF
FOUNDATION
SCALE 2FT. TO AN INCH



DETAIL OF
FOUNDATION
SCALE 2FT. TO AN INCH